



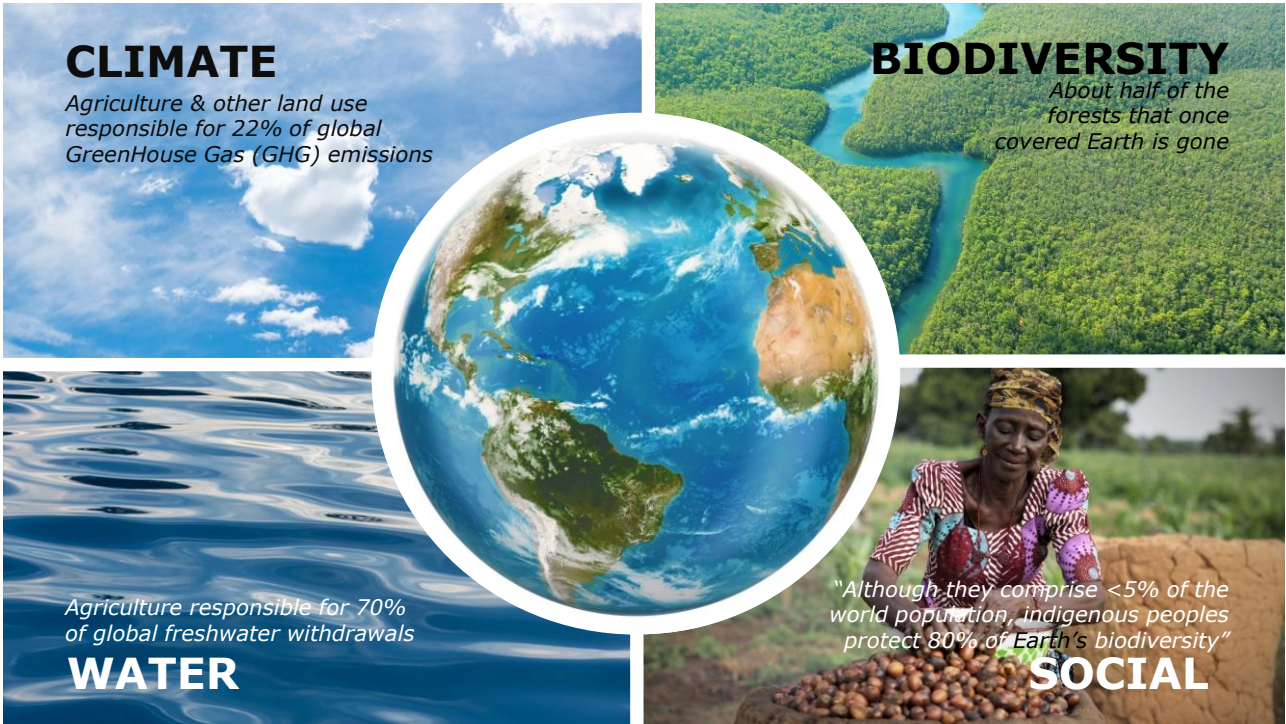
# Growing a better world together

Marjan van Riel

Rabobank

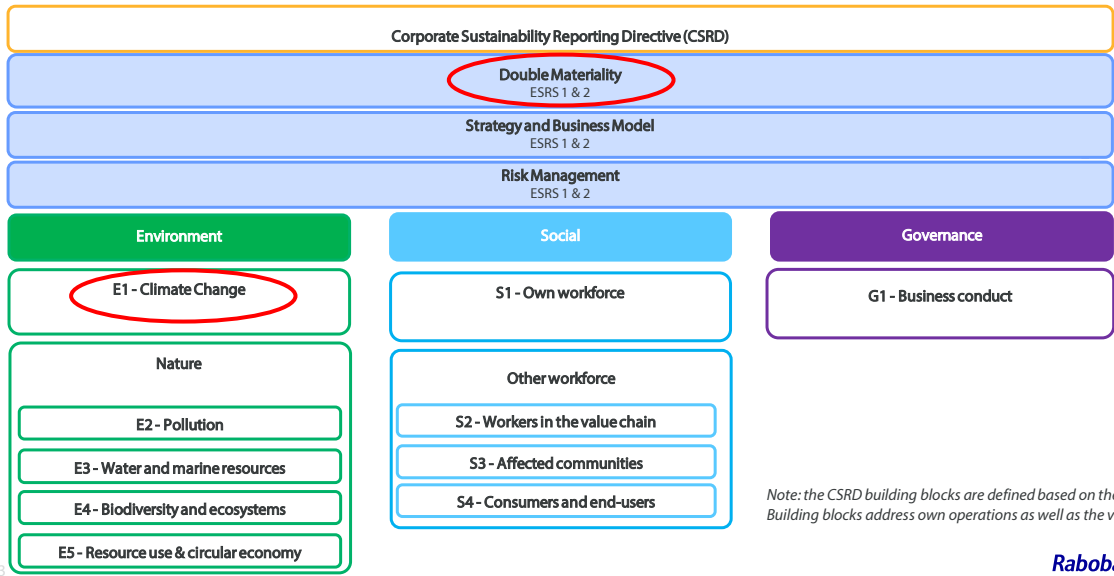
RaboResearch Food&Ag Global Strategist Climate & Sustainability  
Rabobank F&A Leadership Team

1



2

Rabobank CSRD building blocks

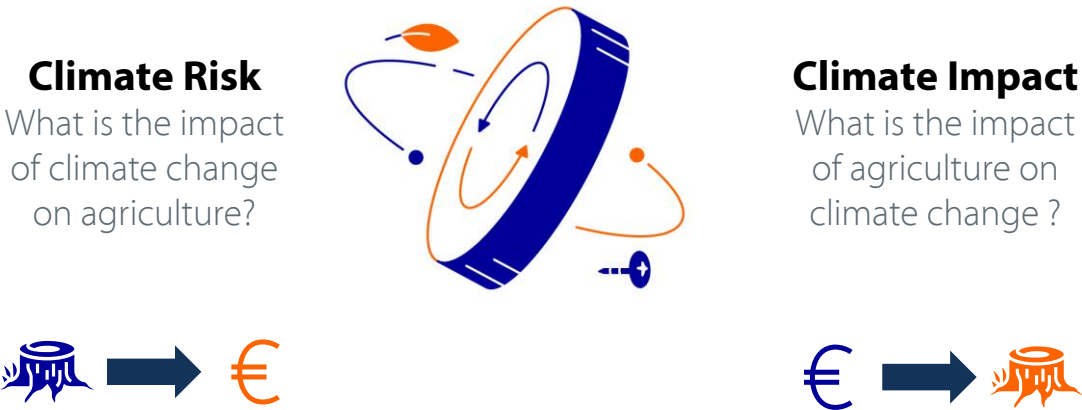


"We are the first generation to feel the impact of climate change...



...and the last generation that can do something about it."

*The two sides of the climate coin – double materiality*



5

*2050 Europe weather forecast*



Based on Climate scenario rcp4.5 in which global av. temperature will have increased +2-3°C by 2100

Source: NRC based on Plos One (2019) Understanding climate change from a global analysis of city analogues

Climate Risk    Climate Impact

+°C  
change in  
temperature of  
hottest month

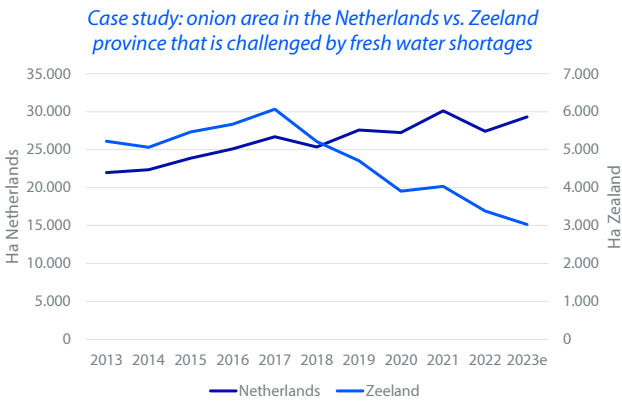
+°C  
change in  
temperature of  
coldest month

Rabobank

6



Example climate change risks - crop production

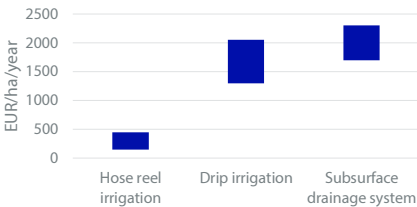


Growers in Belgium reacted on weather extremes

**Boerenbond jaarresultaten: diepvriesgroenteteelt**

Uit de recent gepubliceerde jaarcijfers van Boerenbond blijkt dus dat het areaal van diepvriesgroente in 2022 met 20 procent gedaald is. Het areaal bonen is het sterkst gedaald (-49,7%). De bonenteelt is namelijk enorm gevoelig voor zowel droogte als voor overvloedige regenval. Ook in 2021 daalde het areaal bonen tegenover 2020. Dit jaar werd slechts 855 hectare uitgezaaid.

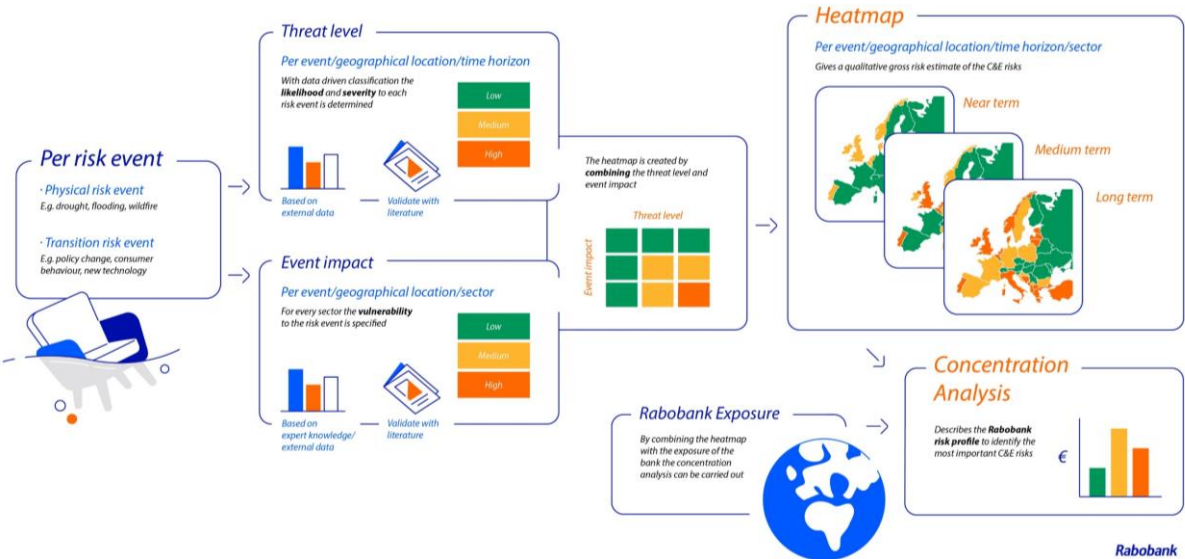
Dryer growing conditions may force growers to invest in more advanced irrigation



Source: CBS, Rabobank, 2023  
Also see: [Akkerbouwer wordt zoetwatermanager: de invloed van toenemende droogte op de Nederlandse akkerbouw – Rabobank](#) (in Dutch)

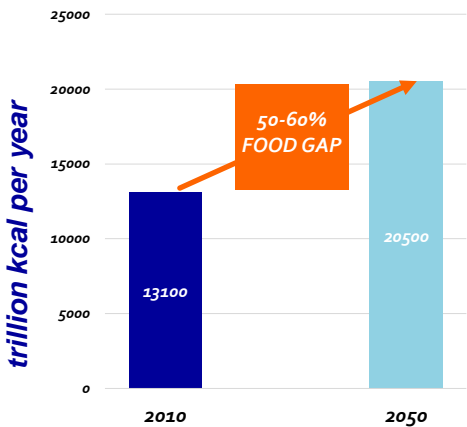
Source: WUR, Rabobank, 2023. **Rabobank**

Rabobank Climate Risk Heatmaps



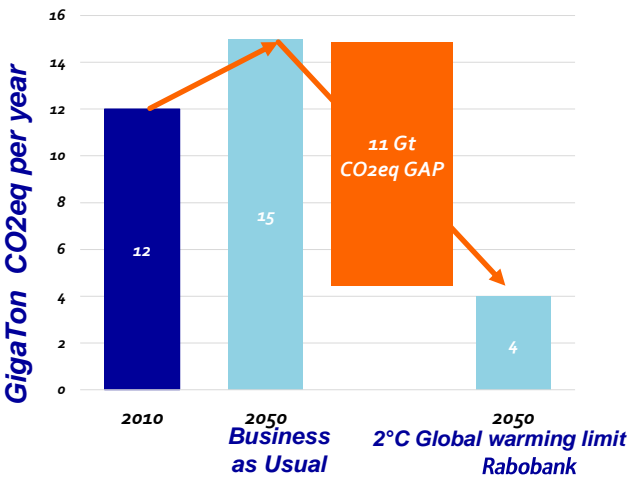
To feed the world sustainably,  
food needs to get 4-5x more carbon efficient

Close the FOOD demand GAP

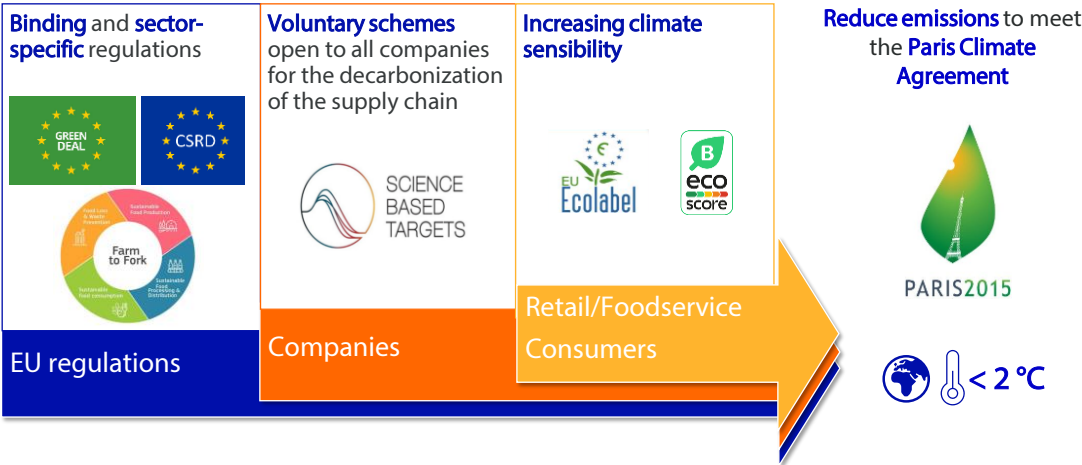


9  
Source: WRI 2019

and the CARBON mitigation GAP



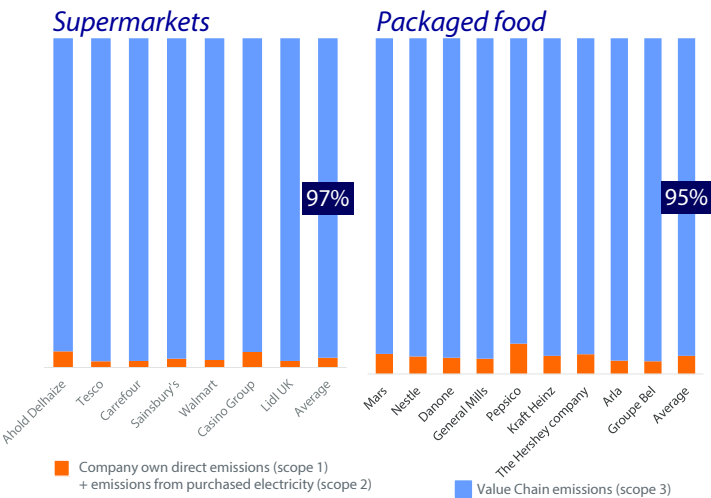
In EU regulators, investors, markets and society pressure  
companies to decarbonize their supply chains



10 Note: Paris Agreement says below 2 degrees, and preferably below 1.5 degrees C.

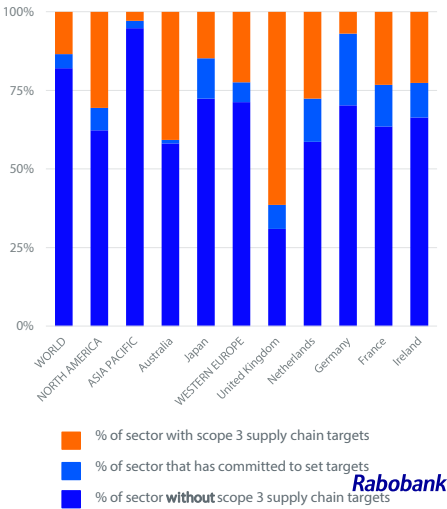
As >90% of their reported emissions are in their supply chains,  
*Downstream F&A corporates turn to their suppliers*

Climate Risk    Climate Impact



11 Source: company reports, Euromonitor, SBTi, Rabobank 2021

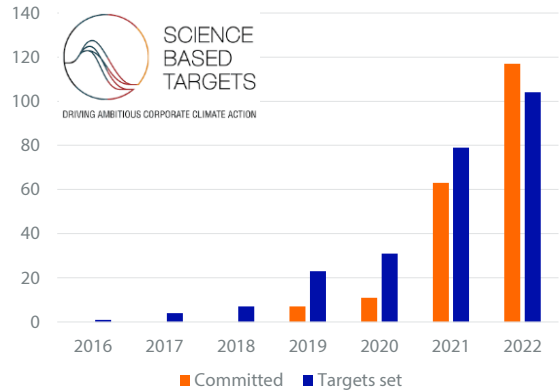
% of retail with scope 3 targets (in terms of 2020 sales)



Climate Risk    Climate Impact

*Food & Ag companies are setting voluntary sustainability targets*  
committing and setting **Science-Based Targets (SBTi)** to reduce greenhouse gas emissions

Number of new F&A companies with SBTi targets



12 Source: SBTi website, as per March 2023.



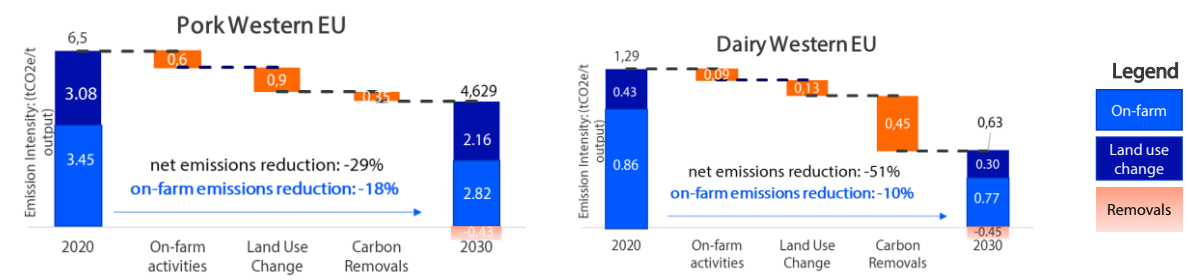
Climate Risk

Climate Impact

Science-Based Targets (SBTi) for GHG emissions reduction for 11 main **FLAG**\* commodities across 26 regions globally

Beef, **dairy**, **pork**, chicken, soy, palm oil, wheat, rice, maize, leather, timber

SCIENCE BASED TARGETS  
DRIVING AMBITIOUS CORPORATE CLIMATE ACTION



13 \* FLAG = Forestry, Land & Agriculture  
Source: FLAG Science Based Target-Setting tool & Guidance version 1.0, 2022

Rabobank

Climate Risk

Climate Impact

# Rabobank & the climate impact context

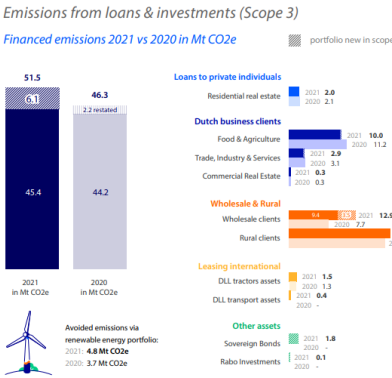
Our carbon footprint in perspective

### Operational emissions (Scope 1&2)

0.058 Mt CO<sub>2</sub>e

### Financed emissions (Scope 3)

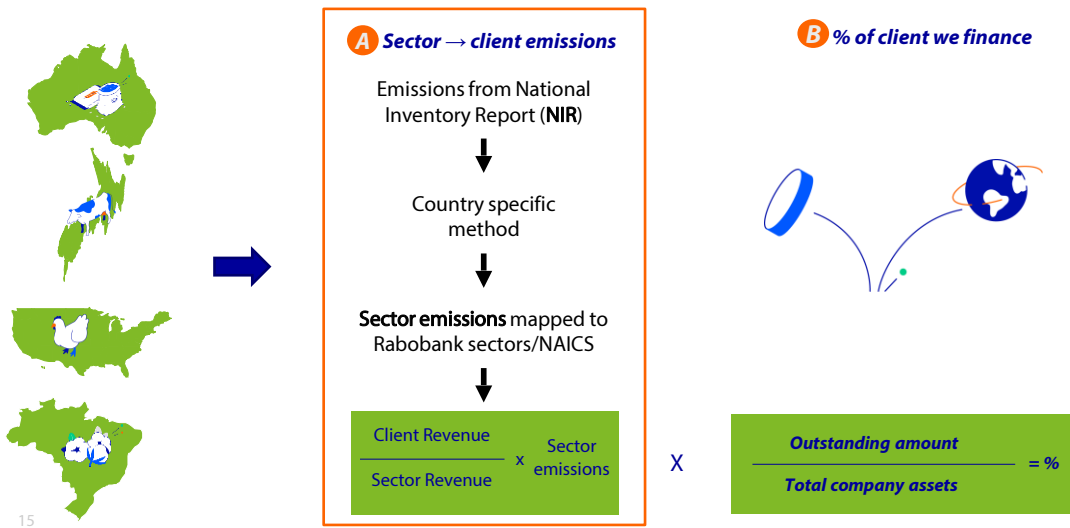
51.5 Mt CO<sub>2</sub>e



Rabobank

Data Difficulty - Agriculture emissions top-down approach

From Country → Sector → Client X Our fair share



15

15

Rabobank steps towards Paris Alignment

Our Paris Alignment approach

Our Financed Emissions cover 87% of relevant client exposures (base year 2021)

Preliminary targets for 12 sector / regions

Implementation strategy & taking action

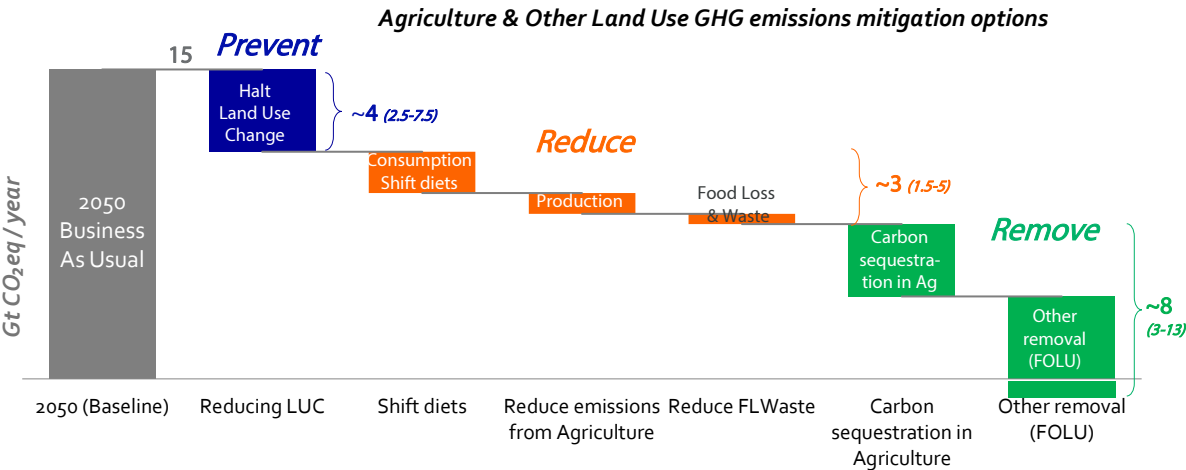
16

Rabobank

16



Agriculture & Other Land Use has the potential to become net zero...  
to even a net sink (net climate positive)



17 FOLU = Forestry & Other Land Use  
Based on rounded numbers from IPCC AR6 WGIII\_SPM.7

Rabobank

17



18

# Important notice

## Disclaimer

This document is meant exclusively for you and does not carry any right of publication or disclosure other than to Coöperatieve Rabobank U.A. ("Rabobank"), registered in Amsterdam. Neither this document nor any of its contents may be distributed, reproduced, or used for any other purpose without the prior written consent of Rabobank. The information in this document reflects prevailing market conditions and our judgement as of this date, all of which may be subject to change. This document is based on public information. The information and opinions contained in this document have been compiled or derived from sources believed to be reliable; however, Rabobank does not guarantee the correctness or completeness of this document and does not accept any liability in this respect. The information and opinions contained in this document are indicative and for discussion purposes only. No rights may be derived from any potential offers, transactions, commercial ideas, et cetera contained in this document. This document does not constitute an offer, invitation, or recommendation. This document shall not form the basis of, or cannot be relied upon in connection with, any contract or commitment whatsoever. The information in this document is not intended, and may not be understood, as an advice (including, without limitation, an advice within the meaning of article 1:1 and article 4:23 of the Dutch Financial Supervision Act). This document is governed by Dutch law. The competent court in Amsterdam, the Netherlands has exclusive jurisdiction to settle any dispute which may arise out of, or in connection with, this document and/or any discussions or negotiations based on it. This presentation has been developed in line with Rabobank's long-term commitment to international food and agribusiness. It is one of many by the global department of RaboResearch Food & Agribusiness.

**Rabobank**