



# Traceability for Sustainability

---

Burcu Turkey

10th April 2024



# Traceability for Sustainability

- 1 A brief intro of **ofi**
- 2 Nuts products and sustainability ambition
- 3 Traceability at Nuts
- 4 Q&A

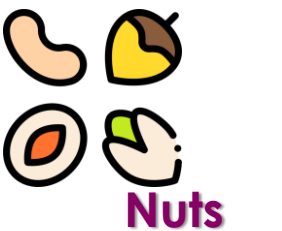
# Snapshot of olam food ingredients – known as ofi



Coffee



Cocoa



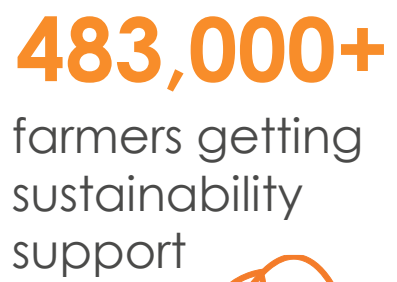
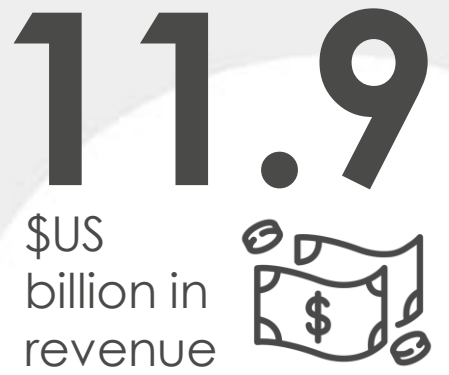
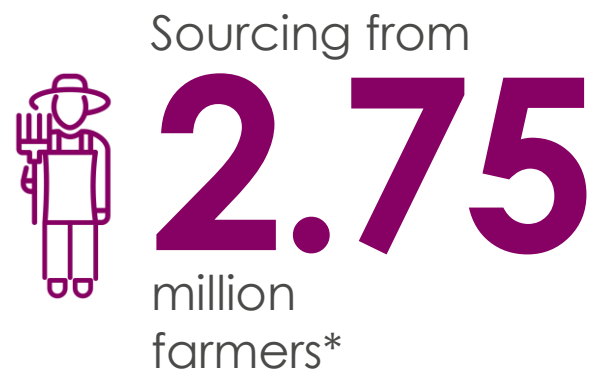
Nuts



Spices



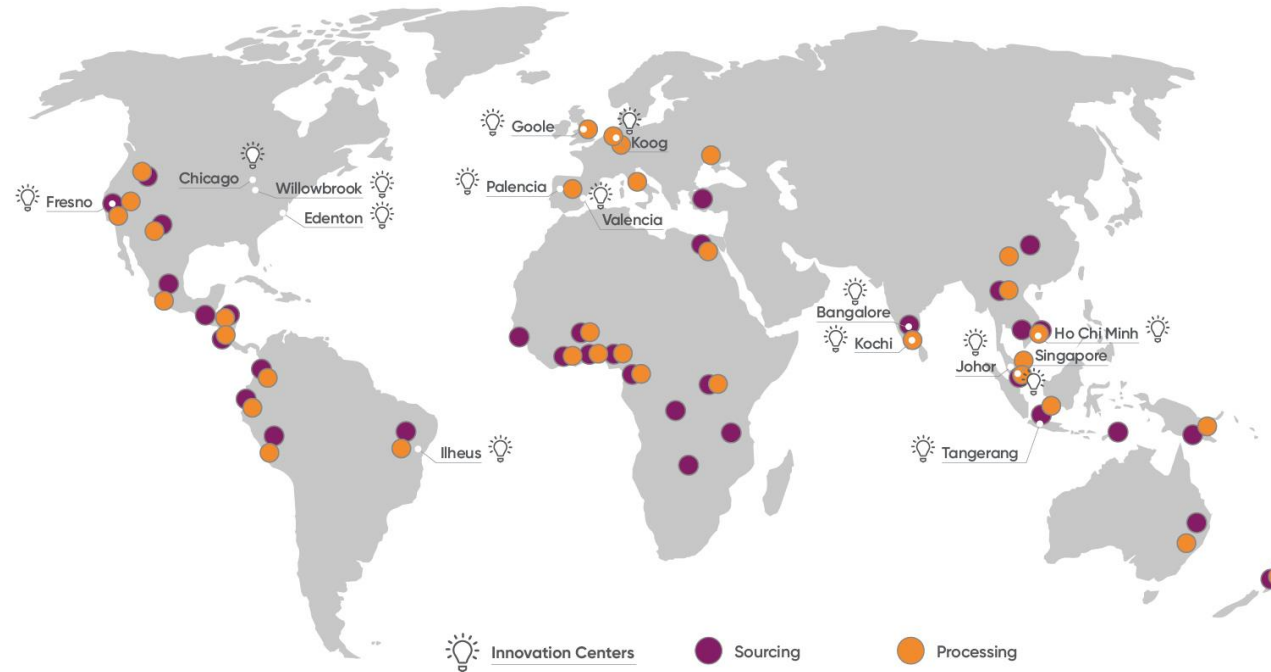
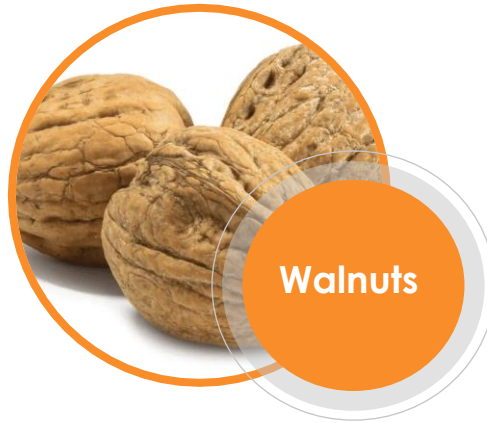
Dairy



\* direct and indirect



# ofi Nuts Products & Sourcing Origins



# Nuts Sustainability Ambitions

Developing distinct sustainability strategies is essential due to the unique:

- ✓ Environmental Factors & Climate Conditions,
- ✓ Social & Economic Considerations, and
- ✓ Supply Chain Transparency & Governance.

## Towards the future By 2030 Hazelnut Trail



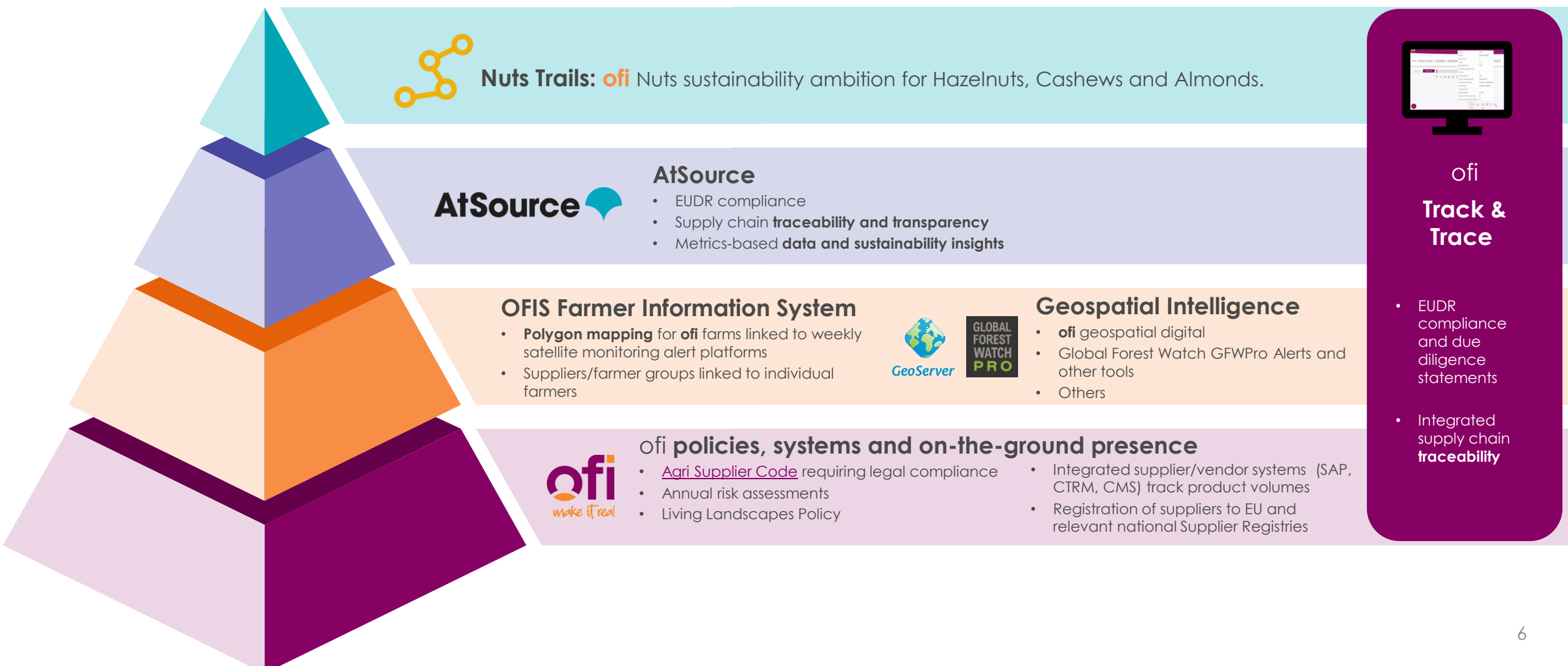
## TOWARDS THE FUTURE Cashew Trail BY 2030



## 2030 targets\* Almond Trail



# How traceability is integrated into ofi's business model



# Offering **end-to-end traceability** across our supply chains

## Traceability

We can offer direct control/chain of custody across the supply chain.

Providing unparalleled visibility AND provenance.

- ✓ Target oriented to drive progress.
- ✓ Digital tools for procurement, with transactions geotagged and timestamped.
- ✓ Transparency across the value chain back to farmer group through AtSource Plus, including 3rd party verification.

## Sustainably Sourced Volumes

Substantial volume and wide range of recognized certifiers across cocoa, coffee, nuts and spices.



## Quality & Food Safety

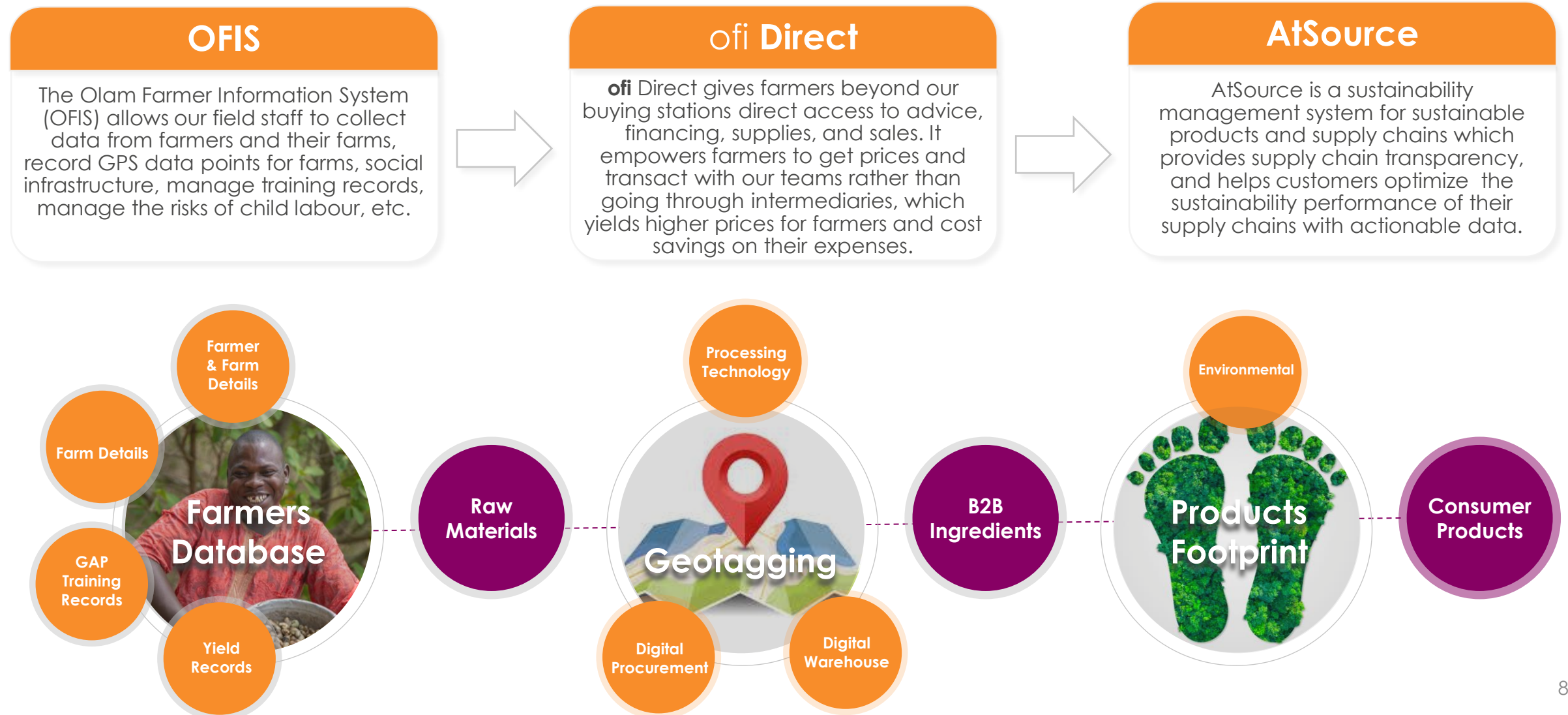
Strict quality and food safety standards in line with industry norms, across our supply chains.

Includes pre-harvest procedures and protocols and post harvest care.



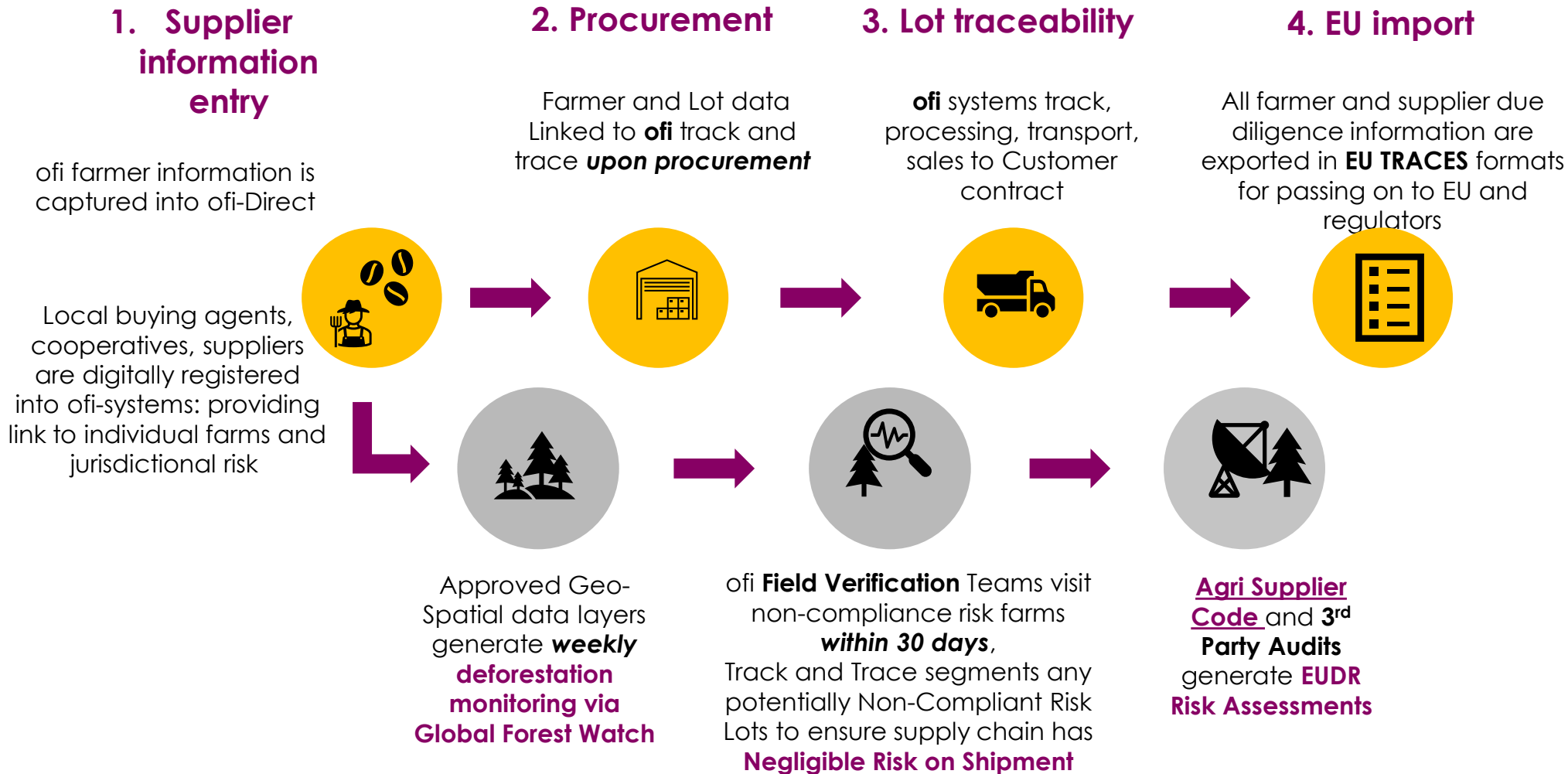


# How **technology** supports our drive for **Traceability**



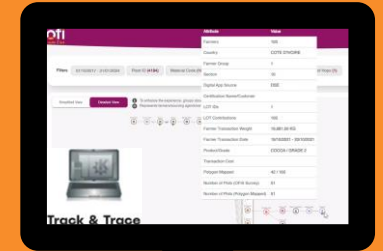


# Track and Trace brings our supply chain ERP together with Farm Level Traceability Apps & External Compliance Data



## Display on ofi Track and Trace

Unified traceability data then appears on **ofi** Track and Trace



## Due Diligence Statement (DDS)



# How does ofi implement advanced risk assessment, farm mapping & traceability?



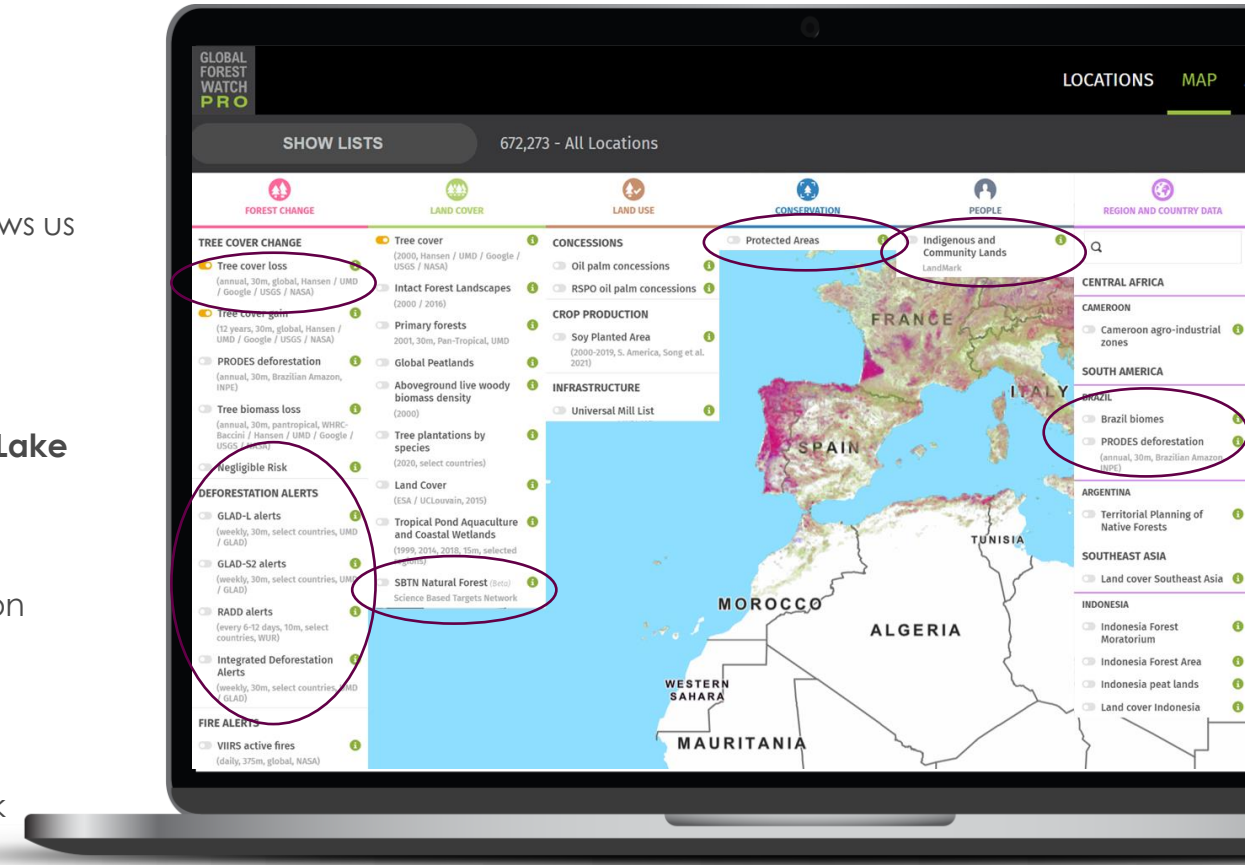
**Supply chain mapping and Traceability to the farm:** ofi has already mapped close to a million individual smallholder farms using ofi digital solutions



ofi's participates in **GFW Gold-Membership (Co Development)**: this allows us to automatically analyze every farm in our supply chain with many geospatial / satellite data sets relevant to EUDR Compliance

## What exactly is GFW Pro?:

- Real time 10m radar alert systems, directly integrated into ofi's Data Lake
- Weekly API Connection to ofi IT / ERP systems
- Catalogue of 34+ Datasets from NASA, ESA, EFI, Accountability Framework, INPE, Wageningen, UMD, RSPO, World Cocoa Foundation West African Risk, IBAT, Landmark, etc...
- Science Based Target Network's (SBTN) Natural Forest Layer, FAO Compliant Filter of non-agricultural areas
- Indigenous / Community Lands, Protected Areas, and Negligible Risk by Jurisdiction from the Accountability Framework



GFW Pro API: Weekly Integrated Alerts, etc...

-----> Ofi Data Lake





# Thank you

---

[www.ofi.com](http://www.ofi.com)

