



# Climate Action in **ofi**

---

Supply Chain.  
GHG Emissions & Management.

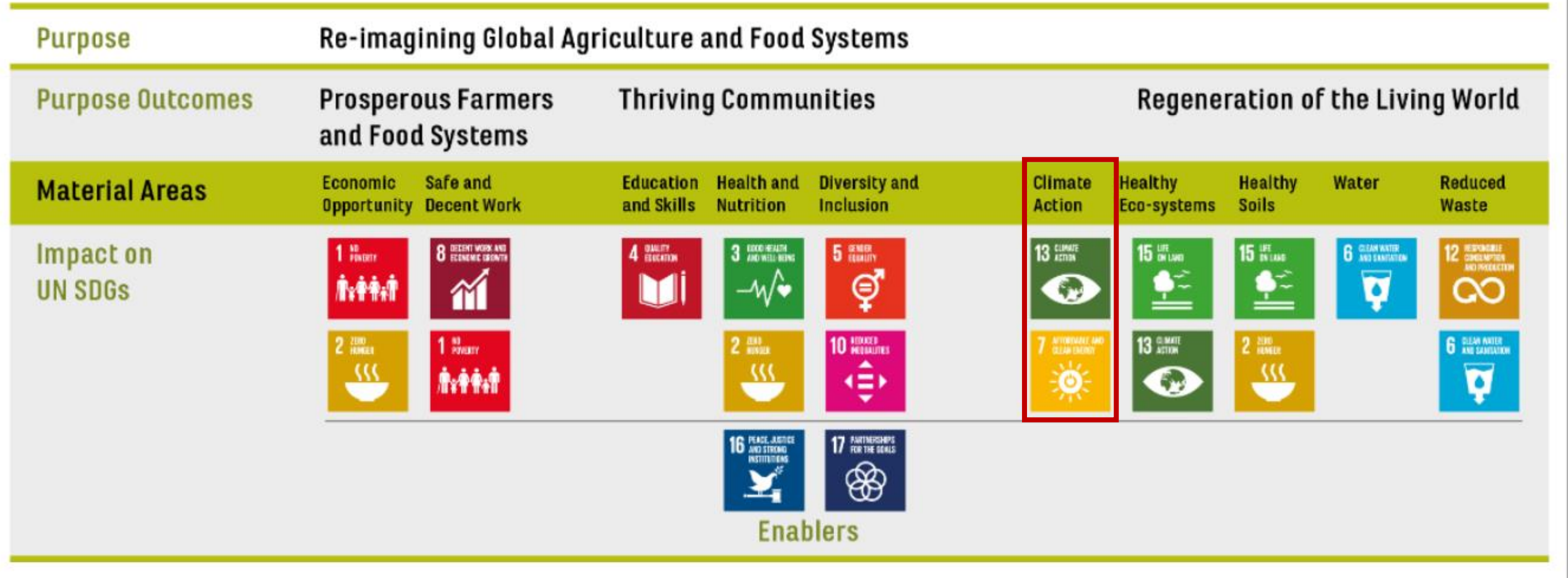


# Content

- 1** Corporate GHG Emissions
- 2** Supply Chain GHG Emissions
- 3** **ofi** Baseline & Actions

# Climate Action is embedded in our Regeneration Purpose

## Our Sustainability Framework



1

# Corporate GHG Emissions

*How we account & Data collection systems:*



# 1.1 GHG Emissions & its Accounting



## Direct Scope 1

**Occurs from sources owned or controlled by a company**

- Emissions from combustion in boilers & Furnaces
- Fuel Use in own vehicles
- Emissions from Chemical Processes



## Indirect Scope 2

**Occurs from generation of Purchased Electricity, Heat or Steam**

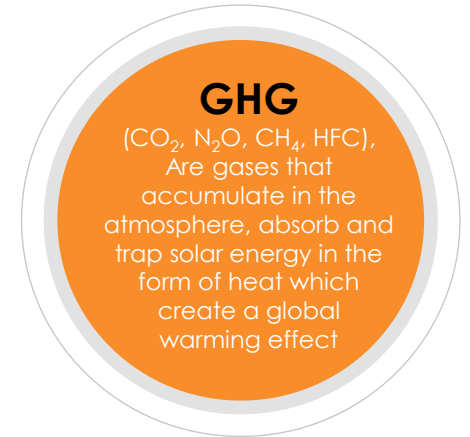
- Used in Processing Facilities
- Office Buildings
- Warehouses



## Indirect Scope 3

**Other Indirect GHG emissions not under Scope 1 or 2**

- Production of purchased Raw – materials
- Transport related activities
- Waste Disposal

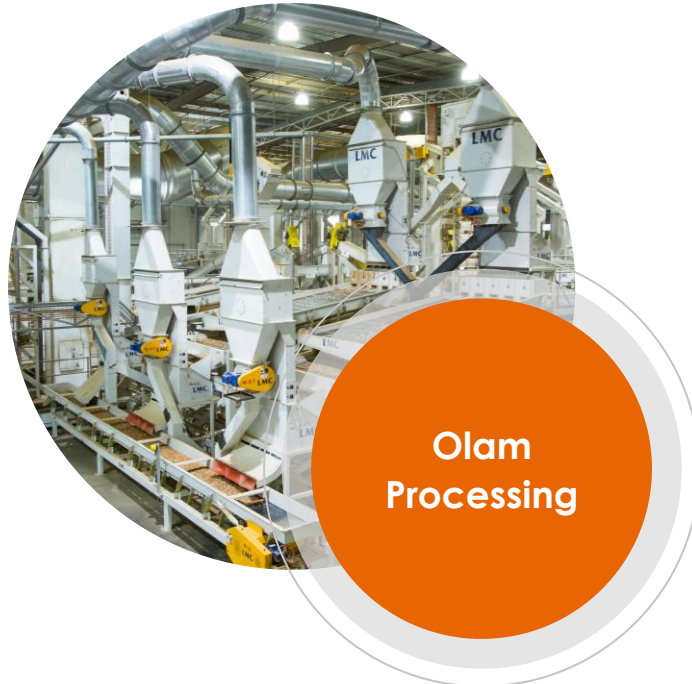


# 1.2 GHG Emissions Scopes & Olam Operations

Uses AtSource Platform  
to calculate Emissions  
Intensity  
*Primary Data on Inputs*

Uses MATS Energy Data  
Collection System &  
*IPCC Global Warming Values*

Uses Raw Materials  
Portfolio  
*Emission Factors from  
accredited Databases*



\* Each Stage of the Value Chain is classified under Scope 1, 2, 3

# 2

## Supply Chain GHG Emissions

*Its Components & Accounting approach:*



## 2.1 Scope 3 Value Chain Accounting

1. Purchased Goods & Services	6. Business Travel	11. Use of sold Products
2. Capital Goods	7. Employee Commuting	12. End of life treatment of sold products
3. Upstream Fuel & Energy Emissions	8. Upstream Leased Assets	13. Downstream leased assets
4. Upstream Transportation & Distribution	9. Downstream Transportation & Distribution	14. Franchises
5. Waste Generated in Operations	10. Processing of Sold Products	15. Investments



Criteria for selecting relevant categories

Size, Influence, Risk, Stakeholder's Interest, Sector Guidance



## 2.2 Notable ways to manage Corporate Carbon Footprint



### Basis your Supply Chain context

- Conduct a screening exercise, identify emission hotspots from the listed categories
- Collaborate with suppliers & other stakeholders to act on selected supply chain activities



### Quality & Consistent Data

- Collect accurate activity data on major Category Contributors
- May use proxy, sampling techniques, secondary data for deprioritised categories



### Simplifies Management & tracking

- Improves process control especially on data collection across multiple business functions
- Enables comprehensive visualization of both activity data & emission factors, easily identify key GHG sources

# 3

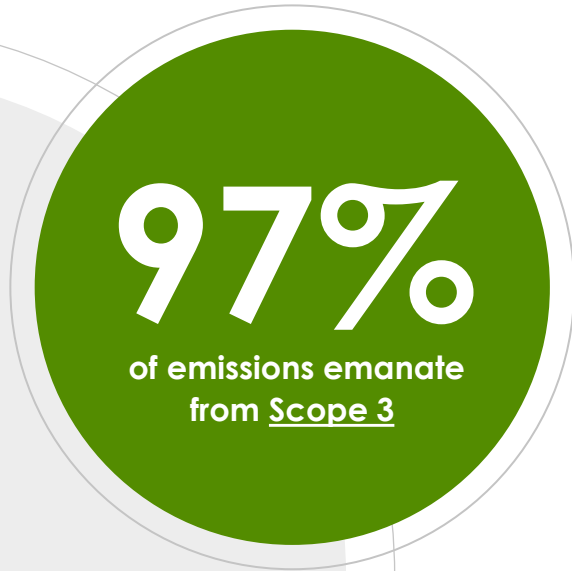
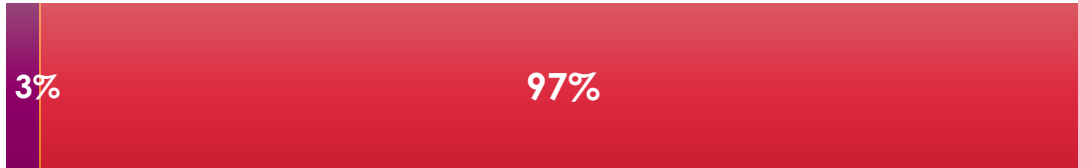
## ofi Baseline & Actions

*How to reduce each Scope, best practices:*

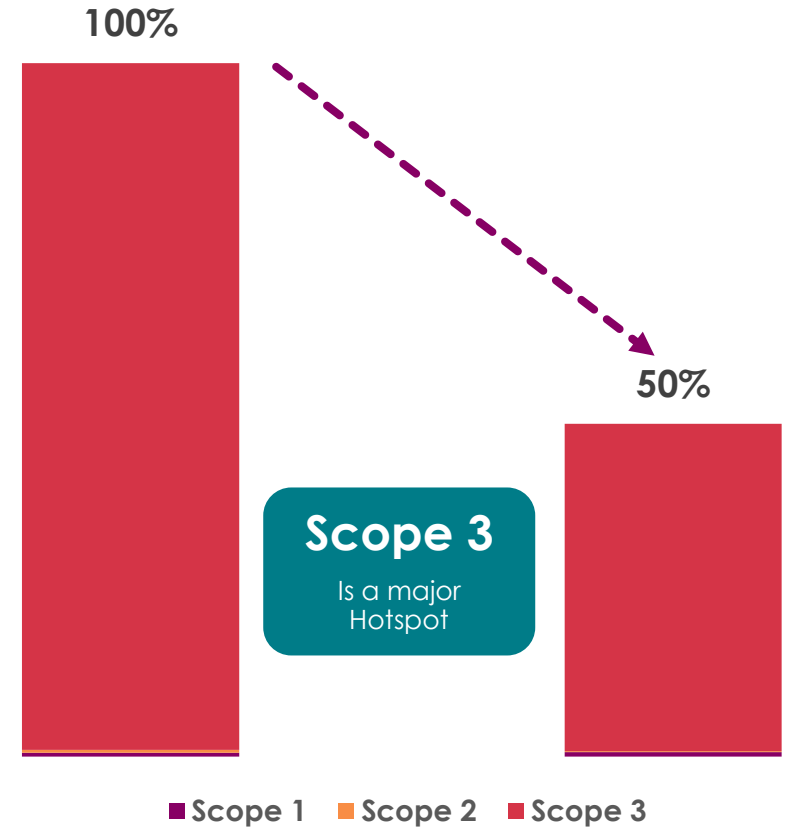


# 3.1 ofi GHG Emissions Baseline

% of Emissions Contribution by Scope



Reductions needed to meet 2030 targets



## 3.2 Identified Focal Practices based on Experience

### Regenerative Agriculture

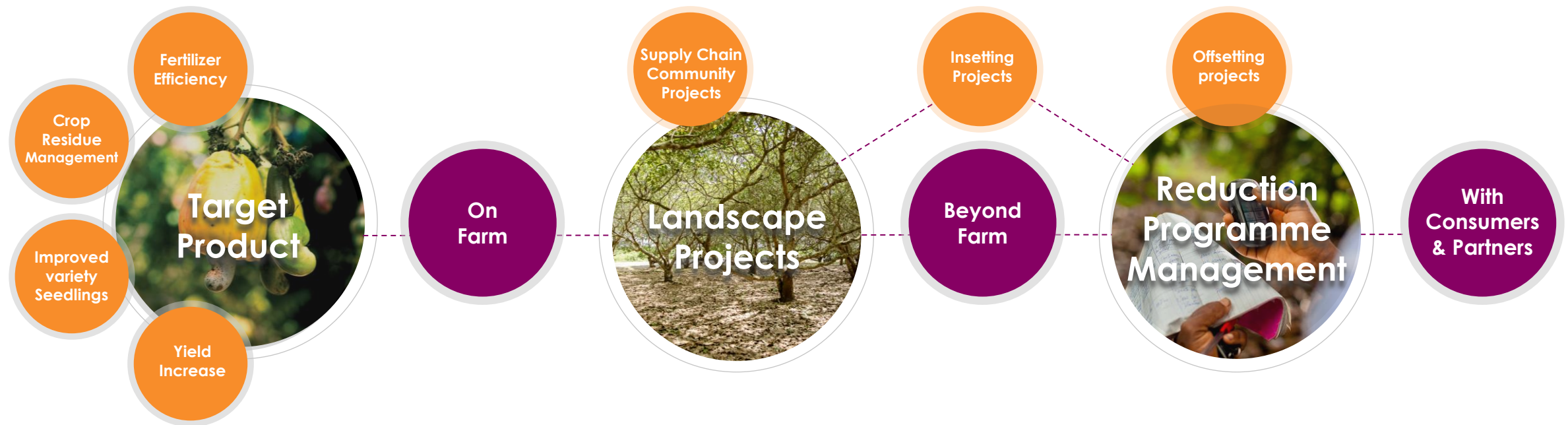
It focuses on Good Agriculture Practices and productivity while concurrently actively restores soil quality and ecosystem conservation.

### Land Use Management

Deforestation is a major driver of emissions from AFOLU sectors, requires strategic collaborations & satellite monitoring solutions to reverse linked impacts & trends.

### Technology Soln & Partnerships

Methodologies, Ground truthing, digitalization are critical requirements in coordinating & overseeing implementation of emission reduction projects.





Thank you

---

[www.ofi.com](http://www.ofi.com)

